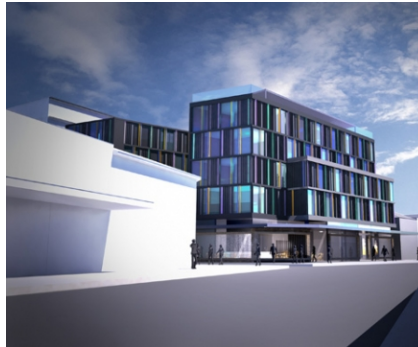
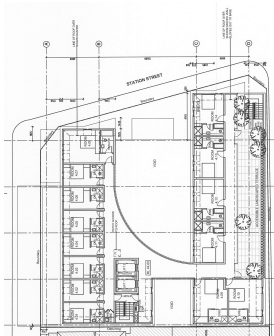


Club Profile

@ Newtown - Redevelopment

Location	King Street, Newtown, NSW
Value	\$8M
Area	2,900m ²
Developer	Petersham RSL Club
Architect	Jackson Teece Architects Pty Ltd
Builder	N/A
Status	Development Consent



About

With the changing demographics of the area the club now longer required a large premises, although the club still wished to maintain a presence in the area.

The club site was well positioned and suited a mixed use redevelopment. By reducing the floor to floor height an additional level was added to the building without substantially increasing the height of the new building over the existing building.

The proposal that was ultimately submitted and approved by the local Council provided a basement loading dock and car park for 17 cars, ground floor club/retail/hotel reception – 660m² and 66 boutique hotel rooms on Levels 1 to 4.

The modern crisp façade was a reflection of the changing demographics and culture of Newtown.