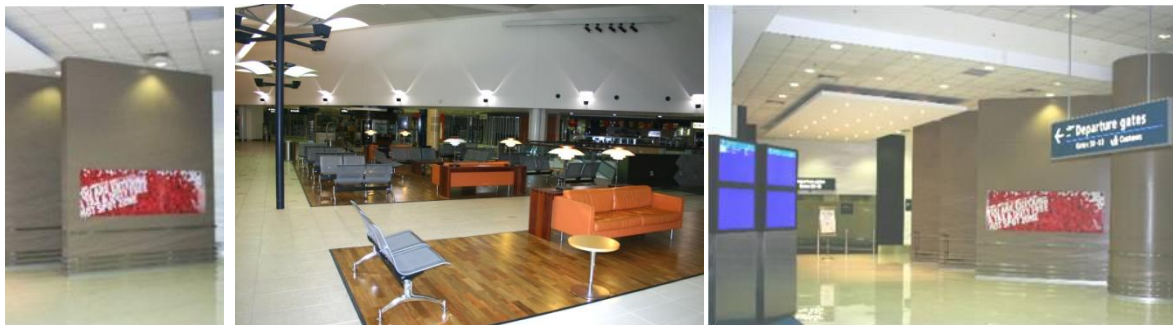


# Commercial Profile

## Sydney International Airport

Location	Kingsford Smith Drive, Mascot NSW
Value	\$1.7M
Area	3,000m <sup>2</sup>
Developer	Sydney Airports Corporation Limited
Architect	Carson Group Pty Ltd
Builder	Inscope Solutions Pty Ltd
Status	Completed 2006



### About

The first stage comprised the refurbishment of various areas within the International Terminal including amenities, lounges and retail outlets on both sides of immigration control.

The scope of the first stage included new finishes to departure gates, floor tiling, ceiling bulkheads, services, bathroom refurbishment as well as refurbishment of furniture & joinery. All work was undertaken out of hours and met strict access & security requirements.

The second stage comprised the upgrading of the fire and mechanical services and the construction of a fire rated enclosure over the airport electricity transformer facility. The enclosures were constructed of a combination of reinforced concrete and fire rated lightweight board and the works were carried out over the transformers whilst they remained fully operational at all times as the facility could not be shut down.

In addition to the challenges of working over operational transformers, Inscope Solutions and their contractors again had to comply with the rigorous security requirements of the airport.