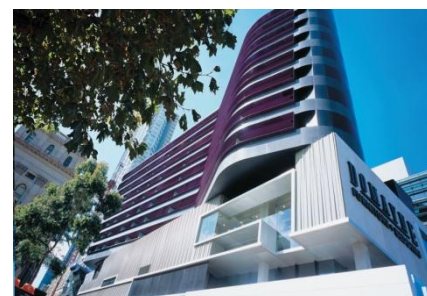
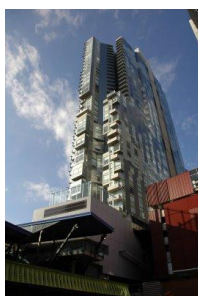




Mixed Use Profile

QV

Location	Cnr Lonsdale, Swanston & Russell Streets, Melbourne, Vic
Value	\$450M
Area	Retail – 45,000m ² , Commercial – 20,000m ² , 594 residential apartments, 1,500 car parking spaces
Developer	ING Real Estate Development/Grocon
Architect	NH Architecture, John Wardle Architects, McBride Charles Ryan Architecture, Lyons Architects, Denton Corker Marshall
Builder	Grocon
Status	Completed 2005



About

QV is a vibrant mixed use development in the heart of Melbourne that comprises basement carparking, a three level retail podium with two office towers and two residential towers over.

The three level retail podium designed by NH Architecture is designed around a major public square and has a number of major tenants including Safeway, Big W, Domayne, Harvey Norman, Officeworks and many designer fashion labels.

QV1 designed by John Wardle Architects is 44-storey tower - 458 apartments with 3 irregularly-shaped floor plates that create sculptural façades at the ends of the building. QV 2 designed by McBride Charles Ryan Architecture is an eight storey building - 136 apartments arranged a unique elongated bean shaped footprint.

QV3 designed by Denton Corker Marshall a low rise large floor plate office development arranged in two elongated 'Y' shaped wings. QV4 -BHP Billiton tower, designed by Lyons Architects is a high rise 29 level office tower fronting Lonsdale Street.

he opportunity to complete their fitout works whilst the parking and civil works were completed.